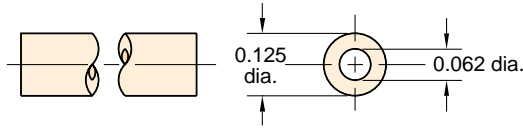




CLIPPARD HOSE & TUBING

3811-1-RL

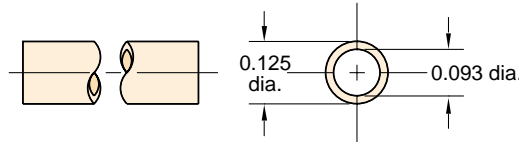
1/8" O.D. Copper Tubing



Material: High pressure copper
Working Pressures: to 2,500 psig
Static Burst Pressure: over 10,000 psig
Lengths Available: 50 feet
Use With: Ferrule tubing connectors #'s: 3810-1
3810-2
11923

NYT1-0403-CLT-□

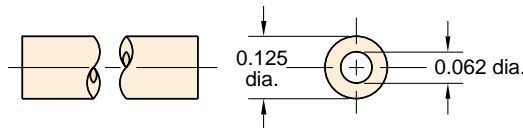
3/32" I.D. Nylon Tubing
(Former Part No. 3814-2)



Material: Semi-flexible nylon tubing
Color: Clear / Translucent
Working Range: to 250 psig
Static Burst Pressure: Approx. 1,000 psig
Use With: Ferrule tubing connectors: 11923
3810-1
3810-2
Forming: May be formed into sharp corners with heat
Lengths Available: 50 and 500 feet

VYH1-0402-CLT-□

1/16" I.D. Vinyl Hose
(Former Part No. 3814-5)

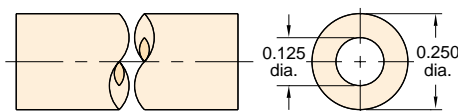


Note:
Consult factory for custom colors

Type: Flexible, durable vinyl plastic hose
Working Range: 0 to 105 psig at 70°F maximum 60 psig at 80°F or above (max. temp. 100°F)
Use With: Hose fittings: 11752-2 and clamp 5000-4
Bend Radius: 3x hose dia.
Color: Translucent: Clear
Lengths Available: 50 and 500 feet

VYH1-0804-CLT-□

1/8" I.D. Vinyl Hose
(Former Part No. 3814-1)

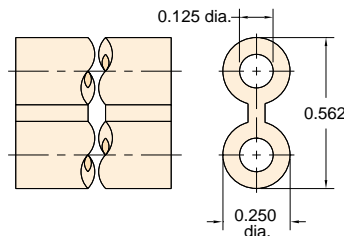


Note:
Consult factory for custom colors

Working Range: 0 to 105 psig at 70°F maximum 60 psig at 80°F or above (max. temp. 100°F)
Use With: Hose fittings: 11752-1, 11752-3 and 11924
Hose clamps: 5000-2
Bend Radius: 3x hose dia.
Color: Translucent: Clear
Lengths Available: 50 and 500 feet

VYH2-0804-GYS-□

1/8" I.D. Twin Vinyl Hose
(Former Part No. 3814-3)



Type: Flexible, durable vinyl plastic hose, but two hoses molded together, one side has rib entire length for identification
Color: Solid: Gray/Gray
Use Clamp: 5000-1
Working Range: 0 to 150 psig at 70°F maximum 60 psig at 80°F or above (max. temp. 100°F)
Use: Ideal for feeding supply in on one line and out on the other, reduces labor; makes neat assembly; may be parted with any sharp cutting edge
Lengths Available: 50 and 500 feet